

Lesson 5: Parking Practice

Practice parking in different situations. Never park in front of a driveway, within 10 feet of a fire hydrant, in or near intersections or close to crosswalks or stop signs.

Straight and Angle Parking

Entering the space:

- Signal and slow or stop the vehicle
- Drive forward until the whole parking space is visible
- Turn in, trying to keep equal distance on both sides of the vehicle
- Pull forward until the vehicle is completely in the space

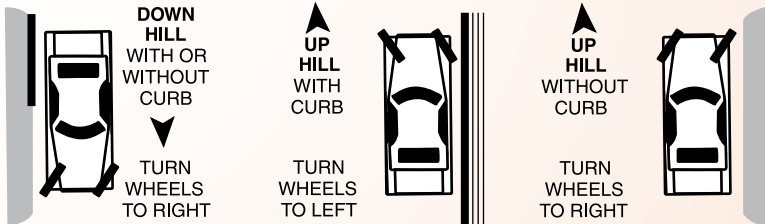
Exiting the space:

- Check behind the vehicle for traffic and pedestrians
- Begin backing out straight, making sure the vehicle clears the other vehicles
- Begin to turn the steering wheel, checking the front of the vehicle to ensure it clears other vehicles
- Continue to check for traffic and pedestrians
- Straighten the vehicle in the proper lane



Parking on hills:

- Park close to the curb or if there is no curb, as far away from traffic as possible
- Turn your wheels in the proper direction (see graphic)
- Turn off the motor, putting the car in proper gear
- Set the emergency/parking brake
- Check your rearview mirror for traffic before stepping out



Reentering traffic:

- Turn on turn signal
- Check for oncoming traffic and pedestrians, including looking in blind spots
- Straighten wheels
- Back slowly, if necessary
- Move forward, turning the steering wheel toward the traffic lane
- Check for oncoming traffic before moving out

Parallel Parking

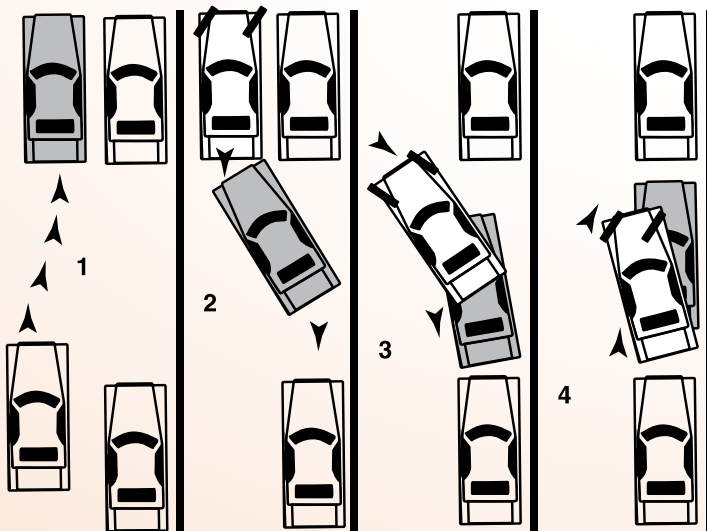
Entering the space:

- Turn on turn signal
- Check mirrors to make sure that traffic is slowing
- Stop when your steering wheel is even with the steering wheel of the vehicle in front of the parking space
- Back up and turn toward the curb until the vehicle is at a 45-degree angle heading into the parking space
- Turn the steering wheel in the opposite direction and continue backing slowly
- Check the vehicle position behind and ahead, making sure the car does not hit any parked vehicles. Watch for pedestrians stepping off the curb
- When the vehicle is about a foot from the vehicle in back, stop. Center your vehicle by pulling forward

Exiting the space:

- Turn on turn signal
- Check for oncoming traffic and pedestrians

PARALLEL PARKING



- Back up until the vehicle is about a foot away from the vehicle behind you
- Check again for traffic and pedestrians; be sure to check blind spots
- Turn the wheel and slowly pull forward into the driving lane
- Be careful not to cross the centerline of the roadway

Lesson 5 Checklist

Parking downhill/uphill

- Uses turn signal
- Checks for traffic and pedestrians
- Parks within about one ft of the curb
- Turns wheels toward the curb
- Puts vehicle in park (first gear for standard transmissions)
- Applies emergency brake

Parallel Parking

- Uses turn signal
- Checks for traffic and pedestrians
- Correctly positions vehicle in preparation for backing
- Correctly backs vehicle into parking space
- Stops before changing direction
- Correctly centers vehicle

Exiting the space/reentering traffic

- Checks available backing distance
- Uses turn signal
- Checks for traffic and pedestrians in front and back of vehicle
- Exits space safely
- Does not cross center lane

Angle and 90-degree parking

- Uses turn signal
- Moves forward until whole space is in view
- Turns safely into parking space
- Pulls entire vehicle into space
- Leaves enough space between other vehicles